



THE TUTORIAL

A NEWSLETTER FROM LEARNING SUPPORT SERVICES

Summer 2009

Vol. 13 * No. 3

LEARNING IN THE ACADEMY: THE COLLEGE TRANSITION

Every summer, staff from Learning Support Services speak to incoming students about the skills and resources necessary to achieve success during the college transition. Skills include time and stress management. For every 15 hours of classes, students will spend approximately 38 hours outside the classroom to achieve optimal success. That is the equivalent of a full time job. So we suggest students accomplish it in increments—start in week one (even if there are no formal assignments), review notes while waiting to return home, talk about class content to friends, or

read the chapter before class and/or just after it. With that much work and the desire to experience a full range of college life, stress can also be high. Just over 40% of UH students have indicated they often experience stress. Fortunately, they also indicate they have good coping skills. To help students cope, they need to learn their triggers and how to avoid them. When it's too much, they can see someone at the counseling center on campus for support.

A successful transition depends on students identifying optimal learning strategies. At

LSS, they can find out their learning style, and ways to adapt, as they need to, for each professor. They can also identify their strengths and weaknesses in learning strategies, and how to improve them. This includes good note taking and test taking skills.

Learning can be enhanced if a student understands the process. There are learning peaks and subsequently, valleys. Successful students make the most of peaks! If you want additional information, go to: www.las.uh.edu/lss and click on "Learning Strategies for the Academy."

NATIONAL RECOGNITION FOR STUDENT LEARNING

Learning Support Services (LSS) is once again achieving national recognition, as only the second university in the nation to receive an additional seven year certification from NADE (National Association for Developmental Education) for its

tutoring program. Receiving this recognition is an honor, at a national level, and requires LSS to provide outcome data indicating effectiveness in student retention and graduation rates. Dr. Laura Heidel, Learning Strategies Counselor,

compiled data from the past seven years. Our current retention rates are slightly higher than for the campus at large. LSS also had to demonstrate its commitment to tutor training and student learning. Congratulations and keep up the good work!

SPECIAL POINTS OF INTEREST:

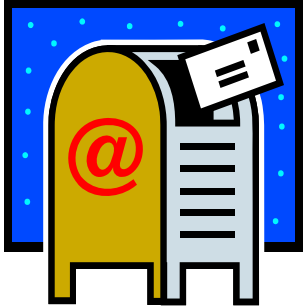
AT LEARNING SUPPORT SERVICES

- **DON'T CANCEL THAT CLASS!** Invite us to speak instead (713-743-5439)
- **FIND OUT ABOUT LSS: PAWS** by calling 713-743-5461
- You can still sign up to receive *The Tutorial* online by sending an email request to ggil-lan@uh.edu

INSIDE THIS ISSUE:

LSS: PAWS FOR LEARNING	2
TUTORING HOURS AND WORKSHOPS	2
HOW FACULTY CAN USE LSS	3
TIPS FROM THE TUTORS	3
OUTSIDE THE BOX: FOCUS ON EXCELLENCE	3
CAMPUS RESOURCES	4

NEWS ON-LINE



WWW.LAS.UH.EDU

LSS: PAWS FOR LEARNING

LSS is proud of its success and its contribution to the graduation and retention rate of students at the university. Our tutoring program has a one year retention and graduation rate of 83%, and we are still looking to grow and improve.

Starting in fall 2009, LSS will begin an initiative to provide multi-level services to students as we develop a new initiative, LSS: PAWS

(Personalized And Web-Based Support) for Learning. PAWS will be open to any students who currently utilize LSS services, but it will create a stronger cohort group, with increased commitment to learning options.

Students who belong to PAWS will have access to our E-Learn system, which will offer interactive workshops, and an online discussion forum as well as a

question board. Student participants will have access to limited online tutoring. Finally, students will be given learning assessments with a specific learning support plan for each student. This is all in addition to the full utilization of LSS services. Required orientation options are August 27 (4 pm) or August 28 (10 am). For more information, call Dr. Gillan at 713-743-5461.

SUMMER TUTORING HOURS

LSS offers tutoring in most subjects including accounting, biology, chemistry, computer science, economics, engineering, English, finance, languages, mathematics, physics, and statistics. LSS is located in 321 Graduate College of Social Work. Following are our tutoring hours for the semester.

Mondays & Tuesdays
10:00 a.m. to 7:00 p.m.
Wednesdays & Thursdays
10:00 a.m. to 6:00 p.m.
SUMMER HOURS

You may contact us at 713-743-5411, or, visit our website www.las.uh.edu/lss.

“We learn more by looking for the answer to a question and not finding it than we do from learning the answer itself”

Lloyd Alexander



SUMMER WORKSHOP SCHEDULE

This is list of summer workshops. Look for more workshops as the fall semester approaches. To register, go to: www.las.uh.edu/lss.

Study Strategies for a Great Summer
6/3 2 pm to 3 pm

Time Management
6/8 11 am to 12 pm

Note Taking
6/17 1 pm to 2 pm

Coping with Test Anxiety
6/24 4 pm to 5 pm

How to Study in the Sciences
7/7 3 pm to 4 pm

Preparing for the GRE
7/9 2 pm to 3 pm

How to Study Foreign Languages
7/13 2 pm to 3 pm

Improving Your Vocabulary
7/20 11 am to 12 pm

Succeeding as a Transfer Student
7/23 2 pm to 3 pm

7/29 4 pm to 5 pm

Preparing for and Coping with Finals
8/3 2 pm to 3 pm

HOW FACULTY CAN USE LSS

At Learning Support Services, we believe that supporting the efforts of a student to learn also includes supporting our faculty. As such, there are several areas where faculty can come to us for assistance.

First, do you have students who are having difficulty with course content? That one is easy. We have certified tutors who can help and our specialty is helping students learn how to

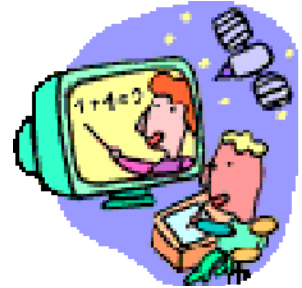
learn. We can also help students to find ways to improve classroom performance by engaging them in learning strategies counseling. Our LSCs complete assessments on each student and set up a learning support plan that will best assist them.

Second, we can assist faculty by helping out with in-class learning modules. Whether you are leaving for a conference and need

a class covered, or simply want to improve overall learning strategies, you can contact us to provide a learning module during class time.

Third, do your students need help in approaching their research requirements? We have staff who can help with that as well.

Finally, call us to consult, to collaborate on projects, or just to find out more about us. 713-743-5411.



TO USE THE MEDIA LAB, JUST ASK THE FRONT DESK STAFF ABOUT LOGGING ON. REMEMBER THAT IT'S PURPOSE IS FOR LEARNING SUPPORT!

TIPS FROM TUTORS

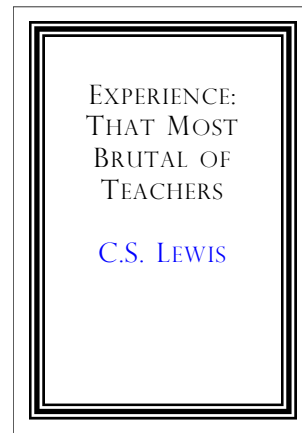
Like most of you, our tutors have to study and prepare for exams. Here are some of the tips they have for making the most of your study time:

- ◇ Make a schedule...and trade study time if you must; don't just cancel study time.
- ◇ Highlight your book. A book is not as ex-

pensive as your class.

- ◇ Attend lectures. Try not to skip! You pay for the classes. Make use of them and the professor's time.
- ◇ Learn how to take notes. Always re-draft your notes before the end of the week, so they make sense to you.

- ◇ Do your homework-even if it is not required; it can only help.
- ◇ If you get distracted easily while studying, go to a quieter spot. There are plenty of spots in the library.
- ◇ Make use of study aids like power point presentations.



OUTSIDE THE BOX: FOCUS ON EXCELLENCE

As University of Houston reaches excellence, so does Learning Support Services. It is our intent to become the premier learning center in the country. To that end, we are looking to focus on success. Did you know...

1. Learning Support Services received a 7 year renewal for its tutor certification from

NADE (National Association for Developmental Education).

2. LSS will also be submitting its renewal next year for certification from the College Reading and Learning Association, recognition at the national level for our tutors.
3. The one year retention

and graduation rate for LSS students who are tutored at LSS is 83%.

4. LSS: PAWS for Learning, is an initiative intended to increase graduation and retention rates as well as create advances in technologically enhanced learning support.



LEARNING SUPPORT SERVICES

UNIVERSITY OF HOUSTON
HOUSTON, TX 77204

PHONE: 713-743-5411

EMAIL: GGILLAN@UH.EDU

*Campus Location:
321 Graduate College of Social Work*



Staff

*Dr. Gail Gillan,
Director for Learning,
713-743-5461 or 5452*

*Dr. Laura Heidel, Learning
Strategies Counselor
713-743-5439*

*Ms. Lorraine Schroeder,
Outreach Counselor
713-743-5463*

*Mr. Ken Williams,
Academic Coordinator
713-743-5411*

The mission of Learning Support Services is to increase graduation and retention rates by helping students learn how to learn.



Learning Support Services: Quick Reference Guide

Main Campus Switchboard		713-743-1000
Academic Advising	Library 56	832-842-2100
University Career Services	106 SSC	713-743-5100
Counseling (CAPS)	226 SSC	713-743-5454
Dean of Students	252 UC	713-743-5470
Center for Student w/ Disabilities	Justin Dart Jr., Center	713-743-5400
Library	M.D. Anderson	713-743-1050
Math Lab	222 Garrison Gym	713-743-6296
Parking	1 E. Cullen	713-743-1097
A.D. Bruce Religion Center	113 A.D. Bruce	713-743-5050
Scholarships & Financial Aid	31 E. Cullen	713-743-9090
University Testing Services	204 SSC	713-744-5444
UH Police: Information		713-743-0600
Women's Resource Center	7 UC Satellite	713-743-5888
Writing Center	211 Agnes Arnold Hall	713-743-3016
UH Wellness	CRWC 1038, UC 35	713-743-5430, 5455